














THE POWER OF PARTNERSHIP

F-15 CAPABILITIES



	<p>Woodward is a manufacturer of control systems and control system components for aircraft engines, industrial engines and turbines, power generation and mobile industrial equipment.</p>
	<p>Collins Aerospace excels in avionics, lighting systems, power transmission systems, wheels and brakes, and landing gear systems, which include the main, nose and wing landing gear assemblies.</p>
	<p>Extant Aerospace offers advanced avionics upgrades and solutions to enhance the performance, reliability, and capabilities of aircraft systems.</p>
	<p>PacSci EMC products ensure the proper initiation, sequencing, and function of aircraft safety systems including emergency escape, canopy fracturing, fire extinguishing, load release, and countermeasures.</p>
	<p>Aero Fluid Products offers a variety of valves including hydraulic, engine, pneumatic, bleed air, anti-ice, pressure regulating, and fuel along with cabin pressure controls and electromechanical and linear actuators.</p>
	<p>Chemring Energetic Devices is the leading manufacturer of countermeasures, energetics, and support test equipment, including the JCAST, ACAST, and SCOT, as well as ignitors and propellant energetics.</p>
	<p>Triumph specializes in the design, development, certification, manufacture and repair of fuel pumps, fuel metering units, fuel controls, and electronic engine control systems.</p>
	<p>Whippany Actuation Systems serves the aerospace and defense industries by designing, manufacturing, and servicing custom electromechanical actuation solutions for commercial and military applications.</p>
	<p>Teledyne Technologies provides electronic components and subsystems, and communications products, including defense electronics, data acquisition, and communications equipment.</p>
	<p>Thomas Instrument specializes in providing precision measurement and control instruments, including pressure gauges, temperature sensors, flow meters, and level indicators.</p>
	<p>BAE Systems is a leading provider of aircraft countermeasures, multiband radios, seating, and cockpit display systems.</p>
	<p>ColumbusJACK/Regent supplies high-quality hydraulic jacks and lifting systems ensuring safe and efficient lifting, positioning, and maintenance of heavy equipment and structures.</p>
	<p>Hartwell is a leader for latches and latching systems including engine cowlings, nacelles, and thrust reversers, as well as interior and exterior access panels, cargo doors, and interior stowage bins.</p>
	<p>Aces Systems is a compact instrument that combines all of the diverse technologies required for high-end engine vibration analysis, transient balance, fan trim balance, propeller balance and acoustic analysis into one tool.</p>

RICARDO FLORES
 BUSINESS DEVELOPMENT DIRECTOR
 CANADA & LATIN AMERICA
ricardo@iptsb.com

TAY KAY LAI
 BUSINESS DEVELOPMENT DIRECTOR
 ASIA/PAC
tay@iptsb.com

MONICA SEMPERLOTTI
 BUSINESS DEVELOPMENT DIRECTOR
 EMEA
monica@iptsb.com

INTEGRATED PROCUREMENT TECHNOLOGIES
 7230 HOLLISTER AVENUE
 GOLETA, CA 93117 USA
 P. 805 682 0842 F. 805 682 9434



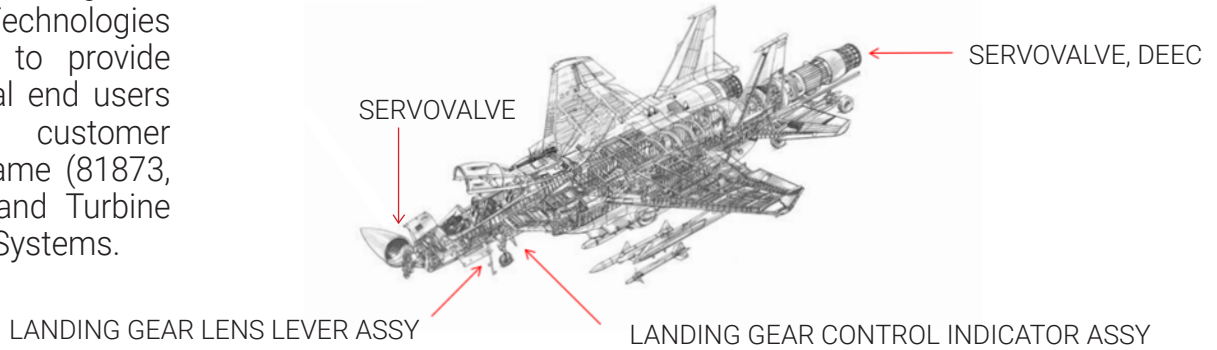
F-15

AIRFRAME AND TURBINE SYSTEMS



Woodward and Integrated Procurement Technologies have partnered to provide F-15 international end users with superior customer service for Airframe (81873, 19710, 60029) and Turbine (65065) Military Systems.

AIRFRAME SYSTEMS



TURBINE SYSTEMS



P/N	DESCRIPTION	NSN
3A1235A	POSITION SENSOR	5990-01-497-0093
569-101000-105	LANDING GEAR CONTROL INDICATOR	1680-01-139-0166
569-703000-2	LANDING GEAR LENS LEVER ASSY	1680-00-329-1408
6B8200B	LINEAR CURRENT AMPLIFIER	
21057140-003	BEARING CONE	1650-01-134-9246
22232520-003	SERVOVALVE	4810-01-089-8900
22232530-003	SERVOVALVE	4810-01-091-1930
22253100-001	SERVOVALVE	1650-00-313-5159
22253260	SERVOVALVE	1650-00-311-0138
22232740	SERVOVALVE	
22281820	SERVOVALVE	
22285238-101	SERVOVALVE	
26600136	SERVO ACTUATOR	
41000140-101	VALVE, PRESS	
21057670-101	SERVOVALVE	
22232380	SERVOVALVE, DEEC	
22282390	SERVOVALVE, DEEC	

P/N	DESCRIPTION	NSN
22282400	SERVOVALVE, DEEC	
22232410	SERVOVALVE, DEEC	
22282420	SERVOVALVE, DEEC	
22282430	SERVOVALVE, DEEC	
3U3167-3	VALVE, LINEAR DIRECTION CONTROL	4820-01-052-4890
3U3173-107	VALVE, ROTARY CAM DIRECTIONAL	4820-00-313-3007
3U3151-5E	RUDDER ROTARY ACTUATOR	1650-01-065-7768
3U3166-6	CANOPY ACTUATOR ASSY	1650-01-035-0799
4085197	AUGMENTOR (SEG. 1)	2915-01-471-1311
4085198	AUGMENTOR (SEG. 2 - OLD)	2915-01-471-3479
4081806	AUGMENTOR (SEG. 2 - NEW)	2915-01-550-3637
4071273	AUGMENTOR (SEG. 3 - OLD)	2915-01-333-9601
4081814	AUGMENTOR (SEG. 3 - NEW)	2915-01-550-3636
4073225	AUGMENTOR (SEG. 4 - OLD)	2915-01-334-7068
4089329	AUGMENTOR (SEG. 4 - NEW)	2915-01-333-9600
4084843/519P194-04	FUEL NOZZLE (UNSTAGED)	2915-01-454-3392
4084844/519P195-02	FUEL NOZZLE (STAGED)	2915-01-454-3393

RICARDO FLORES
BUSINESS DEVELOPMENT DIRECTOR
CANADA & LATIN AMERICA
ricardo@iptsb.com

TAY KAY LAI
BUSINESS DEVELOPMENT DIRECTOR
ASIA/PAC
tay@iptsb.com

MONICA SEMPERLOTTI
BUSINESS DEVELOPMENT DIRECTOR
EMEA
monica@iptsb.com

INTEGRATED PROCUREMENT TECHNOLOGIES
7230 HOLLISTER AVENUE
GOLETA, CA 93117 USA
P. 805 682 0842 F. 805 682 9434

THE POWER OF PARTNERSHIP



F-15 CANOPY ACTUATOR



P/N	DESCRIPTION	NSN
3U3166-6	CYLINDER ASSY, LINEAR CANOPY	1650-01-035-0799
3166-013	ROD END	3120-00-282-0353
3166-012	PISTON	1650-00-280-0488
3166-011-1	END CAP ASSY	1650-00-280-0487
3166-014	TUBE	4710-00-279-9760
3166-017	RING	5325-00-332-6911



RICARDO FLORES
BUSINESS DEVELOPMENT DIRECTOR
CANADA & LATIN AMERICA
ricardo@iptsb.com

TAY KAY LAI
BUSINESS DEVELOPMENT DIRECTOR
ASIA/PAC
tay@iptsb.com

MONICA SEMPERLOTTI
BUSINESS DEVELOPMENT DIRECTOR
EMEA
monica@iptsb.com

INTEGRATED PROCUREMENT TECHNOLOGIES
7230 HOLLISTER AVENUE
GOLETA, CA 93117 USA
P. 805 682 0842 F. 805 682 9434



F-15 CAPABILITIES



POWER ENGINE COMPONENTS

PART NUMBER	NSN	DESCRIPTION
19E173-2	2835-00-390-1884	FLEXIBLE SHAFT INSTALLATION
19E173-4	2535-01-522-8015	FLEXIBLE SHAFT INSTALLATION
19E173-5	3040-01-590-9350	FLEXIBLE SHAFT ASSY

LANDING GEAR CAPABILITIES

PART NUMBER	DESCRIPTION	PART NUMBER	DESCRIPTION	PART NUMBER	DESCRIPTION
68A230175-2011A	TIP POD, VERTICAL STABILIZER	68A410636-2001	BUSHING, FLANGED, TORQUE ARM LUG - MLG	68A410692-2001	BUSHING - MLG
68A332124-2017	BUSHING-SPINDLE BEARING SUPPORTS	68A410637-1001	BOLT ASSY, DRAG BRACE - MLG	68A410692-2005	BUSHING
68A332124-2019	SPACER, RING	68A410637-1004	BOLT ASSY, DRAG BRACE - MLG	68A410692-2007	BUSHING, TRUNNION
68A332124-2021	BUSHING, SPINDLE BEARING SUPPORT	68A410637-2001	BOLT, FORGING OF	68A410702-1005	CYLINDER ASSEMBLY - MLG
68A332124-2023	BUSHING-SPINDLE BEARING SUPPORTS	68A410637-2003	BOLT, MACHINED	68A410702-1006	CYLINDER ASSEMBLY - MLG
68A410601-1001	BELLCRANK ASSY, SWIVEL MECHANISM - MLG	68A410637-2005	BOLT, FORGING OF	68A410702-2005	CYLINDER MACHINED
68A410601-2001	BELLCRANK, FORGING OF	68A410637-2008	BOLT, MACHINED	68A410702-2006	CYLINDER MACHINED
68A410601-2003	BELLCRANK MACHINED	68A410642-2001	BUSHING, SPL. FLANGED - MLG	68A410702-200X	CYLINDER MACHINED
68A410602-2013	300M SAE AMS6419 FORGING,SAE AMS2300	68A410644-2001	BUSHING, LOWER, TORQUE COLLAR - MLG	68A410704-1011	PISTON ASSY - MLG (LH)
68A410602-2014	300M SAE AMS6419 FORGING,SAE AMS2300	68A410645-2001	BUSHING, UPPER, TORQUE COLLAR - MLG	68A410704-1012	PISTON ASSY - MLG (RH)
68A410604-2001	PISTON, FORGING OF	68A410645-2003	BUSHING, UPPER, TORQUE COLLAR - MLG	68A410704-2001	PISTON, FORGING OF
68A410606-1004	CRANK ASSY, SWIVEL - MLG	68A410648-2001	PACKING NUT-MLG	68A410704-2009	PISTON, MACHINING OF (LH)
68A410608-1001	INSERT, LUBRICATION MLG	68A410658-1001	CYLINDER- BUNGEE ASSEMBLY - MLG	68A410704-2009I	PISTON, MACHINING OF (LH)
68A410608-2001	INSERT	68A410658-2001	CYLINDER	68A410704-2010	PISTON, MACHINING OF (RH)
68A410633-2001	TORQUE COLLAR - MLG, FORGING OF	68A410670-2001	BUSHING, OUTER CYLINDER LUG, MLG	68A410704-2010I	PISTON, MACHINING OF (LH)
68A410633-2007	TORQUE COLLAR - MLG, FORGING OF	68A410673-2001	WASHER, KEYING, GLAND NUT MLG	68A410704-2017	PISTON, MLG (LH)
		68A410689-2003	SLEEVE, DRAG BRACE LOCK - MLG	68A410704-2017I	PISTON - MLG (LH) -INCOMPLETE
				68A410704-2018	PISTON, MLG (RH)
				68A410704-2018I	PISTON - MLG (RH) -INCOMPLETE
				68A410705-1007	DAMPENER ASSEMBLY
				68A410705-2007	INSERT FASTENER
				68A410705-2013	RING

RICARDO FLORES
BUSINESS DEVELOPMENT DIRECTOR
CANADA & LATIN AMERICA
ricardo@iptsb.com

TAY KAY LAI
BUSINESS DEVELOPMENT DIRECTOR
ASIA/PAC
tay@iptsb.com

MONICA SEMPERLOTTI
BUSINESS DEVELOPMENT DIRECTOR
EMEA
monica@iptsb.com

INTEGRATED PROCUREMENT TECHNOLOGIES
7230 HOLLISTER AVENUE
GOLETA, CA 93117 USA
P. 805 682 0842 F. 805 682 9434

PART NUMBER	DESCRIPTION	PART NUMBER	DESCRIPTION	PART NUMBER	DESCRIPTION
68A410720-2001	BUSHING, TRUNNION PIN - MLG	68A412758-2003	TARGET - DOWNLIMIT SWITCH, MLG	68A450696-2001	PLUG, AXLE NUT - NLG
68A410720-2003A	BUSHING	68A412795-1003	LINK, LOWER JURY - MLG	68A450698-2001	PLUNGER, AXEL NUT - NLG
68A410721-2001	BUSHING	68A412795-2005	LINK, FORGING OF	68A450704-1003	PISTON ASSY, NLG
68A410721-2003	BUSHING	68A412795-2007	LINK, MACHINED	68A450704-2003	PISTON
68A410721-2005	BUSHING	68A450601-2001	SHOE - TORQUE TRANSFER MLG (F-15)	68A450704-2007	PISTON
68A410721-2007	BUSHING	68A450601-2003	SHOE, TORQUE TRANSFER - NLG	68A450704 MF01	AFTER BEND CHUCK FIXTURE
68A410721-2009	BUSHING	68A450602-1001	CYLINDER ASSEMBLY	68A450724-2001	STOP, VALVE, SLEEVE - NLG
68A410721-2011	BUSHING	68A450602-2001	CYLINDER (FORGING)	68A450726-2001	ORIFICE TUBE
68A410726-1001	TUBE ASSY, ORIFICE SUPPORT - MLG	68A450602-2003	MACHINED CYLINDER	68A450733-2001	RETAINING-BAND NOSE
68A410726-2001	TUBE	68A450604-2001	PISTON-NLG, FORGING OF	68A450756-2003	BUSHING
68A410733-1001	COLLAR TORQUE ASSY - MLG	68A450605-2001	DAMPER, VALVE, SNUBBER - NLG	68A450756-2005	BUSHING
68A410733-1002	COLLAR TORQUE ASSY - MLG	68A450610-2001	300M DIE FORGING PER ASMS6419	68A450759-1001	LINK-ASSY UPPER JURY (NLG)
68A410733-2001	COLLAR, TORQUE MACHINED	68A450610-2003	CRANK, STEERING - NLG	68A450759-2001	LINK, FORGING OF
68A410733-2002	COLLAR, TORQUE MACHINED	68A450616-1005	WEAR-PLATE ASSY TORQUE TRANSFER (NLG)	68A450771-1001	BRACE, LOWER - NLG
68A410735-2001	PIN-TRUNNION(MLG)	68A450631-2001	BUSHING	68A450771-1003	BRACE, LOWER - NLG
68A410764-2001	PIN, JURY BRACE APEX-MLG	68A450631-2003	BUSHING, TRUNNION - NLG	68A450771-2001	BRACE, FORGING
68A410772-2009	BRACE, LOWER DRAG, FORGING OF	68A450640-2001	PIN, CAM ANCHORING UPPER-NLG	68A450771-2003	BRACE, MACHINED
68A410772-2011	BRACE	68A450642-2001	PIN, TIE DOWN RING-NLG	68A450771-2005	BRACE, FORGING
68A410778-2003	BUSHING, LINK LOWER JURY - MLG	68A450645-2001	PIN, HOLLOW LOWER STEERING ATTACH, NLG	68A450771-2007	BRACE, MACHINED
68A410780-2003	STUD, LINK, LOWER JURY-MLG	68A450646-2003	RING, TIE DOWN - NLG	68A450772-1011	BRACE, UPPER NLG
68A410785-2003	STANDPIPE-ORIFICE SUPPORT	68A450648-2001	NUT, GLAND-NLG	68A450772-2013	BRACE
68A410790-2001	PISTON, HIGH PRESSURE - MLG	68A450653-1001	ARM- STEERING SUPPORT NLG (LH)	68A450772-2015A	BRACE
68A410792-1001	BRACE ASSY, LOWER DRAG - MLG	68A450610-2001	300M DIE FORGING PER ASMS6419	68A450904-2001	RETAINER, PISTON - NOSE WHEEL STEERING
68A410792-1003	BRACE ASSEMBLY, LOWER DRAG - MLG	68A450653-1003	ARM- STEERING SUPPORT (NLG)	68A450914-2001	WASHER-LOCKING NOSE WHEEL STEERING
68A410792-2001	BRACE, LOWER DRAG, MACHINED	68A450653-2001	ARM STEERING SUPPORT, NLG, FORGING OF	68A450933-2001	RETAINER, SEAL, RETURN - NOSE WHEEL STEERING
68A410792-2003	BRACE	68A450654-1001	RETAINER RING	68A452602-1001	CYLINDER ASSY, NLG
68A410798-2003	RETAINER-SNUBBER STOP (MLG)	68A450675-2001	PLUG	68A452602-2009	CYLINDER FORGING
68A410799-2001	RING, RETAINING - SUPPORT TUBE BEARING - MLG	68A450679-2001	RING	68A452602-2011	CYLINDER, MACHINED
68A410803-2001	SPACER-PLATE TRANSFER TUBE (MLG)	68A450682-2001	NUT, AXLE - NLG	68A452611-1001	EXTENSION - NLG
68A412702-1001	CYLINDER ASSEMBLY - MLG	68A450682-2003	NUT, AXLE - NLG	68A452611-1003	EXTENSION - NLG
68A412702-2005	CYLINDER, FORGING	68A450683-1001	NUT ASSY, AXLE - NLG	68A452612-2001	PISTON, FLOATING - NLG
68A412702-2007	CYLINDER	68A450686-2001	PISTON, FLOATING - NLG	68A452630-2001	BUSHING, JURY BRACE - NLG
68A412709-2001	PISTON-SECONDARY, MLG			68A697216-1003	MANIFOLD - CHARGING ACCUMULATORS, JET FUEL STARTER PNEUMATIC (F-15)
68A412735-2001	PIN-TRUNNION			68A697216-2001	MANIFOLD-DIE FORGING
				68A697216-20054	MANIFOLD, MACHINED



F-15 COMBINED ALTITUDE RADAR ALTIMETER



COMBINED ALTITUDE RADAR ALTIMETER (CARA) AN/APN-232

P/N 8010000653-6
NSN 5841-01-301-4588

- Standard radar altimeter on many USAF platforms
- Fully military-qualified system for severe operational environments
- Low Probability of Detection and Intercept
- High reliability
- Existing organization and intermediate level test and maintenance capabilities
- Fully established and committed depot logistics support
- Fully integrated with critical avionics systems
- Automatic Terrain Avoidance/Following (TA/TF) Systems
- Ground Collision/Proximity Avoidance/Warning Systems
- Terminal Collision Avoidance System (TCAS)

RECEIVER TRANSMITTER (RT)



HEIGHT INDICATOR (HI)



SIGNAL DATA CONVERTER (SDC)

WEIGHT	Receiver Transmitter (RT): 9.2 pounds
	Signal Data Converter (SDC): 1.9 pounds
	Indicator: 2.1 pounds
	Antenna: 0.3 pound each
DIMENSIONS	RT: 3.50 x 6.30 x 8.75 inches
	SDC: 9.48 x 6.30 x 0.82 inches
	Indicator: 3.25 x 3.25 x 4.10 inches
	Antenna: 4.0 x 4.0 x 0.21 inches

RICARDO FLORES
BUSINESS DEVELOPMENT DIRECTOR
CANADA & LATIN AMERICA
ricardo@iptsb.com

TAY KAY LAI
BUSINESS DEVELOPMENT DIRECTOR
ASIA/PAC
tay@iptsb.com

MONICA SEMPERLOTTI
BUSINESS DEVELOPMENT DIRECTOR
EMEA
monica@iptsb.com

INTEGRATED PROCUREMENT TECHNOLOGIES
7230 HOLLISTER AVENUE
GOLETA, CA 93117 USA
P. 805 682 0842 F. 805 682 9434

F-15

EJECTION SYSTEMS COMPONENTS



F-15 operators need reliable and dependable escape system components that work the first time, every time. This is why IPT is introducing these valuable parts of the highest quality.

The components we offer are qualified to the original aircraft manufacturer's and/or USAF specifications to meet all environmental and operational requirements regardless of aircraft model.

- Pacific Scientific Energetic Materials Company (PSEMC) LLC is the manufacturer for all the parts and performs all manufacturing and lot acceptance testing for each lot identified above.
- Uses latest engineering updates
- Applies proprietary technology to meet requirements
- Provides direct component purchases to meet your schedule needs
- Provides 12-month warranty
- IPT will manage all the customer support and logistics including ITAR control matters and accepting end-user contractual terms and conditions.
- PSEMC optimum repair technology and IPT's superior customer support and service ensures a long lasting repair increasing the MTBF and ensures pilot and aircraft safety.
- Program options:
 - F-15 operators can provide IPT a forecast for the parts in advance so that it can collaborate with PSEMC on available delivery dates for new builds.

PART NUMBER	DESCRIPTION	NSN
103377-444	PRESSURE CARTRIDGE ASSEMBLY	N/A
103377-444	ELECTRIC DETONATOR	N/A
103377-447	ELECTRIC INITIATOR	N/A
2-102430-1	CART, FIRE EXT	1377-00-280-0272
7829332-10	SMDC LINE CORD SET	1377-01-069-7776
7829332-30	SMDC LINE CORD SET	1377-01-069-7777
7829332-50	SMDC LINE CORD SET	1377-01-333-9317
812503-115A	SMDC LINE	1377-01-016-3213
812503-117A	SMDC LINE	1377-01-016-3214
812503-125A	SMDC LINE	1377-01-017-4533
812503-127A	SMDC LINE	1377-01-016-3215
812503-129A	SMDC LINE	1377-01-017-4528
812503-131A	SMDC LINE	1377-01-015-9055
812503-133A	SMDC LINE	1377-01-015-9056
812503-143A	SMDC LINE	1377-01-015-9057
812503-151A	SMDC LINE	1377-01-015-9058
812503-153A	SMDC LINE	1377-01-018-8721

PART NUMBER	DESCRIPTION	NSN
812503-155A	SMDC LINE	1377-01-015-9059
812503-157A	SMDC LINE	1377-01-017-4040
812503-159A	SMDC LINE	1377-01-015-9060
812503-161A	SMDC LINE	1377-01-017-4529
812503-165A	SMDC LINE	1377-01-015-9061
812503-167A	SMDC LINE	1377-01-015-9062
812503-169A	SMDC LINE	1377-01-015-9063
812503-175A	SMDC LINE	1377-01-015-9064
812503-177A	SMDC LINE	1377-01-015-9065
812503-179A	SMDC LINE	1377-01-015-9066
812503-181A	SMDC LINE	1377-01-015-9067
812503-183A	SMDC LINE	1377-01-015-9068
812503-185A	SMDC LINE	1377-01-017-4530
812503-187A	SMDC LINE	1377-01-015-9069
812503-191A	SMDC LINE	1377-01-015-9070
812503-193A	SMDC LINE	1377-01-015-9071
812503-195A	SMDC LINE	1377-01-015-9072
812503-197A	SMDC LINE	1377-01-031-9084
812503-199A	SMDC LINE	1377-01-017-4534
812503-209A	SMDC LINE	1377-01-015-9073
812503-213A	SMDC LINE	1377-01-015-9074
812503-253A	SMDC LINE	1377-01-015-9075

PART NUMBER	DESCRIPTION	NSN
812503-255A	SMDC LINE	1377-01-015-9076
812503-259A	SMDC LINE	1377-01-017-4535
812503-265A	SMDC LINE	1377-01-015-9077
812503-271A	SMDC LINE	1377-01-017-4531
812503-273A	SMDC LINE	1377-01-017-4536
812503-279A	SMDC LINE	1377-01-017-4537
812503-285A	SMDC LINE	1377-01-018-2111
812503-287A	SMDC LINE	1377-01-016-3216
812503-289A	SMDC LINE	1377-01-016-3217
812503-291A	SMDC LINE	1377-01-017-4538
812503-295A	SMDC LINE	1377-01-017-4539
812503-301A	SMDC LINE	1377-01-017-4540
812503-303A	SMDC LINE	1377-01-016-3218
812503-305A	SMDC LINE	1377-01-016-6724
812503-307A	SMDC LINE	1377-01-016-3219
812503-319A	SMDC LINE	1377-01-016-3221
812503-321A	SMDC LINE	1377-01-034-9804
812503-325A	SMDC LINE	1377-01-016-3222
812503-327A	SMDC LINE	1377-01-016-3203
812503-329A	SMDC LINE	1377-01-015-1802
812503-331A	SMDC LINE	1377-01-016-3204
812503-333A	SMDC LINE	1377-01-016-4161

RICARDO FLORES
 BUSINESS DEVELOPMENT DIRECTOR
 CANADA & LATIN AMERICA
ricardo@iptsb.com

TAY KAY LAI
 BUSINESS DEVELOPMENT DIRECTOR
 ASIA/PAC
tay@iptsb.com

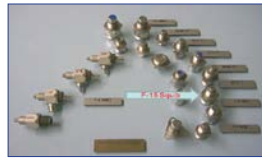
MONICA SEMPERLOTTI
 BUSINESS DEVELOPMENT DIRECTOR
 EMEA
monica@iptsb.com

INTEGRATED PROCUREMENT TECHNOLOGIES
 7230 HOLLISTER AVENUE
 GOLETA, CA 93117 USA
 P. 805 682 0842 F. 805 682 9434

SMDC GAS INITIATOR



FIRE EX SQUIB



ACES II DROGUE SEVERANCE CUTTER



EJECT MODE SELECTOR (DUAL SEAT ONLY)



PART NUMBER	DESCRIPTION	NSN
812503-335A	SMDC LINE	1377-01-013-9250
812503-337A	SMDC LINE	1377-01-018-2110
812503-339A	SMDC LINE	1377-01-014-2401
812503-341A	SMDC LINE	1377-01-014-2402
812503-345A	SMDC LINE	1377-01-014-2404
812503-347A	SMDC LINE	1377-01-033-3361
812503-349A	SMDC LINE	1377-01-020-0519
812503-351A	SMDC LINE	1377-01-014-2405
812503-353A	SMDC LINE	1377-01-014-2406
812503-355A	SMDC LINE	1377-01-014-2407
812503-357A	SMDC LINE	1377-01-017-4524
812503-359A	SMDC LINE	1377-01-027-0137
812503-361A	SMDC LINE	1377-01-016-3205
812503-363A	SMDC LINE	1377-01-020-0520
812503-365A	SMDC LINE	1377-01-020-0521
812503-367A	SMDC LINE	1377-01-017-4525
812503-369A	SMDC LINE	1377-01-017-4526
812503-371A	SMDC LINE	1377-01-017-4527
812503-373A	SMDC LINE	1377-01-016-3206
812503-375A	SMDC LINE	1377-01-016-3207
812503-377A	SMDC LINE	1377-01-016-3208
812503-379A	SMDC LINE	1377-01-016-3209
812503-381A	SMDC LINE	1377-01-016-3210
812503-383A	SMDC LINE	1377-01-016-3211
812503-385A	SMDC LINE	1377-01-016-3212
812503-389A	SMDC LINE	1377-01-017-4532
812503-391A	SMDC LINE	1377-01-037-8573
812503-393A	SMDC LINE	1377-01-037-8572
812503-417A	SMDC LINE	1377-01-180-3094
812503-419A	SMDC LINE	1377-01-251-8539
812503-421A	SMDC LINE	1377-01-251-8538
812503-423A	SMDC LINE	1377-01-251-8523
812503-427A	SMDC LINE	1377-01-251-8528
812503-429A	SMDC LINE	1377-01-251-8541
812503-431A	SMDC LINE	1377-01-251-8524
812503-433A	SMDC LINE	1377-01-252-7039
812503-435A	SMDC LINE	1377-01-251-8534
812503-437A	SMDC LINE	1377-01-251-8533
812503-439A	SMDC LINE	1377-01-251-8532
812503-443A	SMDC LINE	1377-01-251-8530
812503-447A	SMDC LINE	1377-01-251-8527
812503-449A	SMDC LINE	1377-01-252-9822
812503-451A	SMDC LINE	1377-01-251-8526

PART NUMBER	DESCRIPTION	NSN
812503-453A	SMDC LINE	1377-01-251-8543
812503-455A	SMDC LINE	1377-01-251-8522
812503-457A	SMDC LINE	1377-01-254-4714
812503-463A	SMDC LINE	1377-01-251-8535
812503-467A	SMDC LINE	1377-01-251-8542
812503-471A	SMDC LINE	1377-01-252-9821
812503-473A	SMDC LINE	1377-01-251-8525
812503-481A	SMDC LINE	1377-01-251-8537
812503-485A	SMDC LINE	1377-01-251-8540
812503-487A	SMDC LINE	1377-01-251-8536
812503-489A	SMDC LINE	1377-01-251-8531
812503-493A	SMDC LINE	1377-01-314-5164
812503-495A	SMDC LINE	1377-01-314-5163
812503-497A	SMDC LINE	1377-01-314-5165
812503-499A	SMDC LINE	1377-01-314-5162
812503-501A	SMDC LINE	1377-01-318-7693
812503-503A	SMDC LINE	1377-01-318-7694
812503-505A	SMDC LINE	1377-01-318-7692
812503-529	SMDC LINE	1377-01-456-2575
816891-1	INITIATOR, ONE-WAY TRANSFER	1377-01-220-3746
821019-3	INITIATOR, SMDC/GAS	1377-01-203-1960
821020-1	TIME DELAY - 0.4 SEC	1377-01-203-8651
826213-01	3-MODE SELECTOR, EJECT SEQUENCE	1377-01-437-4075
30351-9	CART, IMPULSE, AAR	1377-00-313-4761
2297100-3	REMOVER, CANOPY	1377-00-361-6048
21301900-1	TIME DELAY - 0.75 SEC	1377-00-238-0554
9198851-10	PADD	1377-01-380-1682
21084-7	CART, IMPULSE, AAR	1377-00-261-5371
30351-9	CART, IMPULSE, AAR	1377-00-313-4761
2271700-2	ARM FIRE INIT, INTERNAL CANOPY JET	1377-00-322-0778
6064200	INITIATOR, GAS/SMDC	1377-01-262-0521
2297800-1	REMOVER, CARTRIDGE	1377-00-138-2871
1002-500	CART, IMPULSE	1377-01-281-2058
1003-500	CART, IMPULSE, T	1377-01-281-6802
1005-500	CART, IMPULSE, TRAINING	1377-01-281-2059
1040-3	SWITCH, IFF	1377-00-295-2166
6120400	VALVE, EXPLOSIVE ACTUATED	1377-01-423-0804
2130300-1	INITIATOR, GAS/GAS	1377-00-238-0552
2271100-1	ARM FIRE INIT, EXTERNAL CANOPY JET	1377-01-063-2198
2404100-3	REMOVER, CANOPY	1377-00-349-3938
2404800-1	CANOPY REMOVER CTG	1377-01-202-9195
3123900-5	TIME DELAY - 1.5 SEC	1377-01-318-7697
3123900-6	TIME DELAY - 2.0 SEC	1377-01-318-7696

RICARDO FLORES
 BUSINESS DEVELOPMENT DIRECTOR
 CANADA & LATIN AMERICA
ricardo@iptsb.com

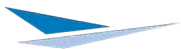
TAY KAY LAI
 BUSINESS DEVELOPMENT DIRECTOR
 ASIA/PAC
tay@iptsb.com

MONICA SEMPERLOTTI
 BUSINESS DEVELOPMENT DIRECTOR
 EMEA
monica@iptsb.com

INTEGRATED PROCUREMENT TECHNOLOGIES
 7230 HOLLISTER AVENUE
 GOLETA, CA 93117 USA
 P. 805 682 0842 F. 805 682 9434



F-15 CAPABILITIES



AEROFLUIDPRODUCTS

P/N	DESCRIPTION	NSN
765705-1	BUSHING, SLEEVE	3120-01-143-3168
765926-1	WIRING HARNESS SET, ELECTRICAL	6150-01-572-3602
AS101-4-11	PIN, STRAIGHT, HEADED	5315-01-500-5582

RICARDO FLORES
BUSINESS DEVELOPMENT DIRECTOR
CANADA & LATIN AMERICA
ricardo@iptsb.com

TAY KAY LAI
BUSINESS DEVELOPMENT DIRECTOR
ASIA/PAC
tay@iptsb.com

MONICA SEMPERLOTTI
BUSINESS DEVELOPMENT DIRECTOR
EMEA
monica@iptsb.com

INTEGRATED PROCUREMENT TECHNOLOGIES
7230 HOLLISTER AVENUE
GOLETA, CA 93117 USA
P. 805 682 0842 F. 805 682 9434



F-15 CAPABILITIES

Chemring Energetic Devices

SAFETY SYSTEMS

Chemring designs and manufactures a range of highly effective safety systems used in emergency situations including crew egress. These are supported by safety testing equipment, including communications and oxygen supply testing. Chemring supplies complementary products for ejection seat deployment systems, such as rocket propellant, canopy cords, time delay devices, and actuation devices. High reliability and high performance within the egress sequence is essential.

Chemring Energetics is the leading manufacturer of CAD/PAD components used on the ACES II seat utilized in the F-16, F-15, A-10, B-1B, B-2, and F-22. Examples of the type of components supplied for these platforms include: Time Delay Devices, Ejection Seat Mortar Cartridges, Drogue Gun Cartridge, Harness Release Cartridge, Harness Release Cutter, and Gyro Pin Up Cartridge.



ACTUATORS



GAS GENERATORS



POWER CARTRIDGES



JCAST

P/N	DESCRIPTION	NSN
6028100	INITIATOR, EXPLOSIVE, MECH. ACTUATED	1377-01-166-4264
6028100R	INITIATOR, EXPLOSIVE, MECH. ACTUATED	1377-01-166-4264
6036200	INITIATOR, ONE-WAY TRANSFER	1377-01-167-6621
6036300	INITIATOR, EXPLOSIVE, MECH. ACTUATED	1377-01-166-4266
6036300R	INTERNAL CANOPY INITIATOR	1377-01-166-4266
6064200R	INITIATOR, GAS TO SMDC, PRIMERLESS	1377-01-262-0521
6121100	.75 SECOND TIME DELAY INITIATOR	1377-01-414-8933
6124100	GAS TO GAS INITIATOR	1377-01-425-0548
6139100R	MODE SELECTOR	1377-01-479-9295
6139100	MODE SELECTOR	1377-01-479-9295
6028200	INITIATOR, EXPLOSIVE, MECH. ACTUATED (DUAL)	1377-01-166-4265
6028200R	INITIATOR, EXPLOSIVE, MECH. ACTUATED (DUAL)	1377-01-166-4265
6028300	INITIATOR, GAS, EXPLOSIVE ACTUATED	1377-01-166-4262
6028300R	INITIATOR, GAS, EXPLOSIVE ACTUATED	1377-01-166-4262
6028400	INITIATOR, GAS, EXPLOSIVE ACTUATED	1377-01-165-2080

P/N	DESCRIPTION	NSN
6028400R	INITIATOR, GAS, EXPLOSIVE ACTUATED	1377-01-165-2080
6104100	INITIATOR, 0.4 SEC. DELAY	1377-01-355-0088
6104100R	INITIATOR, 0.4 SEC. DELAY	1377-01-355-0088
6122100	.75 SECOND TIME DELAY INITIATOR	1377-01-414-8934
6184100	SWITCH ASSEMBLIES	
6185100	LEVER ASSEMBLIES	
6185200	LEVER ASSEMBLIES	
6186100	THERMAL BATTERY	
6123100	2.0 SECOND TIME DELAY INITIATOR	1377-01-414-8935
6012100-04	DROGUE CUTTER	1377-01-234-0706
6066100-02	GYRO SPIN GAS GENERATOR	1377-01-319-3847
6067200	MORTAR CARTRIDGE	1377-01-536-4060
6254100	DRS PM	1377-01-616-5059
9392046-2	HARNES RELEASE CARTRIDGE	1377-01-368-5411
9392046-1	CARTRIDGE, IMPULSE	1377-01-322-0071
6177100-20	JOINT COMBINED AIRCREW SYSTEMS TESTER (JCAST)	4920-01-516-8250

RICARDO FLORES
BUSINESS DEVELOPMENT DIRECTOR
CANADA & LATIN AMERICA
ricardo@iptsb.com

TAY KAY LAI
BUSINESS DEVELOPMENT DIRECTOR
ASIA/PAC
tay@iptsb.com

MONICA SEMPERLOTTI
BUSINESS DEVELOPMENT DIRECTOR
EMEA
monica@iptsb.com

INTEGRATED PROCUREMENT TECHNOLOGIES
7230 HOLLISTER AVENUE
GOLETA, CA 93117 USA
P. 805 682 0842 F. 805 682 9434

THE POWER OF PARTNERSHIP



F-15 CAPABILITIES



RADAR COOLANT PUMP/RESERVOIR

Triumph Thermal Systems and Integrated Procurement Technologies have entered into an agreement to support military customer needs worldwide. This proactive partnership provides a complete customer service package that includes responding to spare and repair requirements.

Triumph Thermal Systems (TTS) is a leading global manufacturer & supplier of heat exchange and transfer systems and components for temperature control in fuel, lubrication, hydraulic, environmental, and related systems. They are the aerospace industry's provider of choice for high-quality thermal management technologies worldwide as a result of premier service and support of aerospace, military and other commercial customers since 1929.

PART NUMBER	DESCRIPTION	NSN
UA534121-16	RADAR COOLANT PUMP/RESERVOIR	1660-01-035-9636
UA534116-6	RADAR COOLANT HEAT EXCHANGER	5841-00-293-5876
UA538795-3	FUEL/OIL HEAT EXCHANGER	1650-01-228-8118
UA534149-21	FUEL/OIL HEAT EXCHANGER	1650-01-227-5464



RICARDO FLORES
BUSINESS DEVELOPMENT DIRECTOR
CANADA & LATIN AMERICA
ricardo@iptsb.com

TAY KAY LAI
BUSINESS DEVELOPMENT DIRECTOR
ASIA/PAC
tay@iptsb.com

MONICA SEMPERLOTTI
BUSINESS DEVELOPMENT DIRECTOR
EMEA
monica@iptsb.com

INTEGRATED PROCUREMENT TECHNOLOGIES
7230 HOLLISTER AVENUE
GOLETA, CA 93117 USA
P. 805 682 0842 F. 805 682 9434



F-15 CAPABILITIES



Whippany Actuation Systems

P/N	DESCRIPTION	NSN
R15015	LINEAR ACTUATOR	
R15015-1	LINEAR ACTUATOR	
R15015-15E-1	LINEAR ACTUATOR	1680-01-228-3821
R15015-3-1	LINEAR ACTUATOR	1680-00-538-8968
R15015-3-2	LINEAR ACTUATOR	1680-01-094-6707
R15015M1	LINEAR ACTUATOR	
R15015M2	LINEAR ACTUATOR	
R15016-15E-1	LINEAR ACTUATOR	1680-01-228-3822
R15016-3-1	LINEAR ACTUATOR	1680-00-123-8168
R15023-15E-1	LINEAR ACTUATOR	1680-01-237-5871
R15023M1-3	LINEAR ACTUATOR	1680-00-508-9183
R5170M34-4	ACTUATOR, ELECTRO	1680-00-426-5616

RICARDO FLORES
BUSINESS DEVELOPMENT DIRECTOR
CANADA & LATIN AMERICA
ricardo@iptsb.com

TAY KAY LAI
BUSINESS DEVELOPMENT DIRECTOR
ASIA/PAC
tay@iptsb.com

MONICA SEMPERLOTTI
BUSINESS DEVELOPMENT DIRECTOR
EMEA
monica@iptsb.com

INTEGRATED PROCUREMENT TECHNOLOGIES
7230 HOLLISTER AVENUE
GOLETA, CA 93117 USA
P. 805 682 0842 F. 805 682 9434



F-15 CAPABILITIES



Teledyne and Integrated Procurement Technologies have entered into an agreement to support military customer needs worldwide. This proactive partnership provides a complete customer service package that includes responding to spare and repair requirements.

P/N	DESCRIPTION
10002200-501	Sequencer
10002250-501	Battery
10002260-501	Mode Selector
10002300-501	DRS/MASS Test Set
10002290-503	EISS Test Set -- F-15K
10002290-505	EISS Test Set -- F-15SG
10002290-507	EISS Test Set -- F-15SA



RICARDO FLORES
BUSINESS DEVELOPMENT DIRECTOR
CANADA & LATIN AMERICA
ricardo@iptsb.com

TAY KAY LAI
BUSINESS DEVELOPMENT DIRECTOR
ASIA/PAC
tay@iptsb.com

MONICA SEMPERLOTTI
BUSINESS DEVELOPMENT DIRECTOR
EMEA
monica@iptsb.com

INTEGRATED PROCUREMENT TECHNOLOGIES
7230 HOLLISTER AVENUE
GOLETA, CA 93117 USA
P. 805 682 0842 F. 805 682 9434



F-15 CENTRAL GEARBOX 2X CLUTCH & BRAKE ASSEMBLY



From new product development to mature and proven fleet support, Thomas Instrument is committed to delivering best-in-class engineering, manufacturing, overhaul, testing and licensing services. Thomas Instrument is an award-winning supplier of mechanical, electro-mechanical and hydraulic flight controls, accessory systems, servo design, winch systems, and ball screw design for direct, prime, and OEM markets. Thomas Instrument is certified to the AS9100Rev D standard.

Thomas Instrument has more than 40 years of experience in all phases of support for military flight hardware. We have the staff, equipment, experience, and facilities to perform turn key design, development, testing, and repair and overhaul services on the most demanding aircraft products.

Benefits of Thomas 2X Clutch and Brake Assembly

- Typical life is expected to be a minimum of 1500 engagements vs. a maximum of 600 engagements with legacy OEM and Thomas designs
- Improved performance of clutch discs via upgraded clutch material
- Thomas Instrument 2X C&B is a USAF tested and qualified design
- Endurance, Form-Fit-Function and material verification tests conducted by USAF and Thomas
- Test data collected supports the 2X design will significantly improve reliability and decrease maintenance man-hours/dollars

LEGACY	P/N	NSN
THOMAS	87060-01	2835-01-633-4979

2X	P/N	NSN
THOMAS	88448-10	2835-01-680-1911



RICARDO FLORES
BUSINESS DEVELOPMENT DIRECTOR
CANADA & LATIN AMERICA
ricardo@iptsb.com

TAY KAY LAI
BUSINESS DEVELOPMENT DIRECTOR
ASIA/PAC
tay@iptsb.com

MONICA SEMPERLOTTI
BUSINESS DEVELOPMENT DIRECTOR
EMEA
monica@iptsb.com

INTEGRATED PROCUREMENT TECHNOLOGIES
7230 HOLLISTER AVENUE
GOLETA, CA 93117 USA
P. 805 682 0842 F. 805 682 9434



F-15

CENTRAL GEARBOX COMPONENTS

From new product development to mature and proven fleet support, Thomas Instrument is committed to delivering best-in-class engineering, manufacturing, overhaul, testing and licensing services. Thomas Instrument is an award-winning supplier of mechanical, electro-mechanical and hydraulic flight controls, accessory systems, servo design, winch systems, and ball screw design for direct, prime, and OEM markets. Thomas Instrument is certified to the AS9100Rev D standard.

Thomas Instrument has more than 40 years of experience in all phases of support for military flight hardware. We have the staff, equipment, experience, and facilities to perform turn key design, development, testing, and repair and overhaul services on the most demanding aircraft products.

P/N	DESCRIPTION	NSN
87165-01	FAN, AXIAL	2385-01-034-6929
87036-01	SHAFT, STUB COUPLING	2835-00-312-1220
87227-01	ROTOR SET	2835-00314-9760
87042-01	BACKPLATE, GEARBOX	2835-00-390-3544
87245-01	SPACER RING, OIL PUMP	2835-00-518-6362
87237-01	RING, PUMP	2835-00-518-6392
87232-01	ROTOR SET	2835-00-518-6397
87238-01	RING, PUMP	2835-00-519-9705
87035-01	TUBE, OIL	2835-00-523-3057
87233-01	ROTOR SET	2835-00-526-4556
87122-01	RING, AIR SEALING	2835-00-607-4662
87048-01	DISK ASSEMBLY	2835-01-004-7067
87043-01	SPLINED INPUT ADAPTER	2835-01-034-6928
87251-01	PUMP HOUSING	2835-01-034-6930
87086-01	STATOR, GEARBOX, FAN	2835-01-034-6943
87045-01	ADAPTER ASSY, OUTPUT	2835-01-041-5693
87286-01	NUT PLATE, RETAINER	2840-01-430-3573
87287-01	NUT PLATE, RETAINER	2840-01-430-3574
87016-01	PLATE, CLUTCH	3010-01-004-2984
87166-01	CLUTCH ASSEMBLY	3010-01-315-6149

RICARDO FLORES
BUSINESS DEVELOPMENT DIRECTOR
CANADA & LATIN AMERICA
ricardo@iptsb.com

TAY KAY LAI
BUSINESS DEVELOPMENT DIRECTOR
ASIA/PAC
tay@iptsb.com

MONICA SEMPERLOTTI
BUSINESS DEVELOPMENT DIRECTOR
EMEA
monica@iptsb.com

INTEGRATED PROCUREMENT TECHNOLOGIES
7230 HOLLISTER AVENUE
GOLETA, CA 93117 USA
P. 805 682 0842 F. 805 682 9434



F-15 JET FUEL STARTER SYSTEM



From new product development to mature and proven fleet support, Thomas Instrument is committed to delivering best-in-class engineering, manufacturing, overhaul, testing and licensing services. Thomas Instrument is an award-winning supplier of mechanical, electro-mechanical and hydraulic flight controls, accessory systems, servo design, winch systems, and ball screw design for direct, prime, and OEM markets. Thomas Instrument is certified to the AS9100Rev D standard.

Thomas Instrument has more than 40 years of experience in all phases of support for military flight hardware. We have the staff, equipment, experience, and facilities to perform turn key design, development, testing, and repair and overhaul services on the most demanding aircraft products.

Description of Thomas Jet Fuel Starter System

- The system is designed for use with JFS/CGB Mobile Test Stand.
- The Thomas Jet Fuel Start System includes a pneumatic control system, an air receiver, air starter and air compressor.
- Also designed for use with ambient air. The air receiver is normally pressurized to 180 psig by the system's electrically driven compressor.
- The system is prewired for 1 phase, 115 VAC, 60 Hz. operation, but can be configured for 1 phase, 230 VAC, 60 Hz. operation.
- The system has two modes of operation:
 - Energy Limited Mode, (2 JFS/CGB starts before recharging is necessary)
 - Capacity Limited Mode, (20 JFS/CGB starts/hour continuously)



P/N	NSN
87163-01	4920-01-630-7469

RICARDO FLORES
BUSINESS DEVELOPMENT DIRECTOR
CANADA & LATIN AMERICA
ricardo@iptsb.com

TAY KAY LAI
BUSINESS DEVELOPMENT DIRECTOR
ASIA/PAC
tay@iptsb.com

MONICA SEMPERLOTTI
BUSINESS DEVELOPMENT DIRECTOR
EMEA
monica@iptsb.com

INTEGRATED PROCUREMENT TECHNOLOGIES
7230 HOLLISTER AVENUE
GOLETA, CA 93117 USA
P. 805 682 0842 F. 805 682 9434



F-15

ALE-47 COUNTERMEASURES DISPENSER SYSTEM

BAE SYSTEMS

The ALE-47 Airborne Countermeasures Dispenser System identifies and defeats infrared and radio frequency missiles.

The ALE-47 system uses information from integrated electronic warfare sensors such as radar warning receivers and missile warning receivers to determine the correct response to defeat infrared and radio frequency guided missiles. The cockpit crew has complete control of their threat situation by choosing to operate in any of the four modes: automatic, semiautomatic, manual, and bypass.

BENEFITS

- Combat proven
- More than 3,000 systems installed
- Operating in 30 countries
- Integrates with EW sensors
- Interchangeable with obsolete ALE-40/ALE-39 and M-130 systems
- Uses U.S. and NATO standard and new RF and infrared decoys
- Glass cockpit compatible



COCKPIT DISPLAY UNIT



PROGRAMMER



DISPENSER ASSEMBLY



MAGAZINE ASSEMBLY



SAFETY SWITCH

PART NUMBER	DESCRIPTION	NSN
179720-0001	SWITCH, SAFETY	5930-01-333-2196
179750-0001	DISPENSER	5865-01-334-8349
179740-0002	COCKPIT DISPLAY UNIT	5865-01-380-8046
179730-0005	PROGRAMMER	5865-01-437-3371
179730-0006	PROGRAMMER	5865-01-437-3373
179250-0003	SEQUENCER	5865-01-451-2868
179250-0012	SEQUENCER	5865-01-527-2187

RICARDO FLORES
BUSINESS DEVELOPMENT DIRECTOR
CANADA & LATIN AMERICA
ricardo@iptsb.com

TAY KAY LAI
BUSINESS DEVELOPMENT DIRECTOR
ASIA/PAC
tay@iptsb.com

MONICA SEMPERLOTTI
BUSINESS DEVELOPMENT DIRECTOR
EMEA
monica@iptsb.com

INTEGRATED PROCUREMENT TECHNOLOGIES
7230 HOLLISTER AVENUE
GOLETA, CA 93117 USA
P. 805 682 0842 F. 805 682 9434

ALE-47 SUPPORT EQUIPMENT

Countermeasures Dispensing Test Sets (CDTS)

- P/N 188100-7001
- Safety requirement for operational use
 - Stray Voltage Testing
- End-to-End System Testing
 - Suitable for Engineering Lab, System Integration Lab, System Troubleshooting, and Flight Line use



CDTS



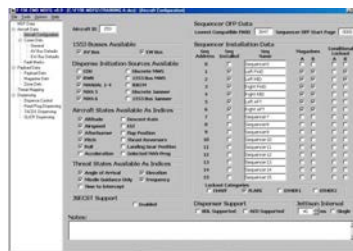
MLV

Memory Load Verifier (MLV)

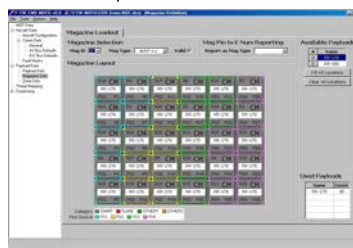
- Loads/Verifies ALE-47 Programmer Software
 - Mission Data File (MDF)
 - Operational Flight Program (OFP)
- MIL-STD-1553 Interface
- Hosted on a Ruggedized COTS computer
 - Suitable for Flightline Use
- Can be combined with TMG on single computer

Threat Matrix Generator (TMG)

- COTS computer configured with BAE Systems proprietary software
- Create and edit Mission Data Files (MDFs) for the ALE-47 Programmer
- Each TMG version supports MDF development for all aircraft with the same ALE-47 Operational Flight Program (OFP)
- Data screens are grouped in a logical manner, promotes ease of use
- Validates values entered are within acceptable ranges



Sample TMG Screens



SLTS

Intermediate-Level Tester

I-level tester is the Shop Level Test Set (SLTS)

- Acceptance Testing and Intermediate Level Testing of ALE-47 Electronic LRUs
 - Same Acceptance Test Procedure (ATP) performed at the OEM
- Identifies faults at the Circuit Card Assembly (CCA) level
- New technology refreshed in 2015
- Year over year contracts for international customers ensures upgrades and availability
- Single SLTS can test all ALE-47 LRUs across multiple platform types

Logistics Support

- Direct Commercial Sales (DCS) arrangement recommended
 - Foreign Military Sales (FMS) not required
- Spares can be positioned at end user facilities
- With SLTS, I-level repairs can be performed in-country
- Spares positioned at BAE Systems OEM factory
- Reduced lead time
- Depot repairs at BAE Systems OEM factory

RICARDO FLORES
BUSINESS DEVELOPMENT DIRECTOR
CANADA & LATIN AMERICA
ricardo@iptsb.com

TAY KAY LAI
BUSINESS DEVELOPMENT DIRECTOR
ASIA/PAC
tay@iptsb.com

MONICA SEMPERLOTTI
BUSINESS DEVELOPMENT DIRECTOR
EMEA
monica@iptsb.com

INTEGRATED PROCUREMENT TECHNOLOGIES
7230 HOLLISTER AVENUE
GOLETA, CA 93117 USA
P. 805 682 0842 F. 805 682 9434

LOW PROFILE FLOTATION COLLAR (LPFC)

BAE Systems' Life Preserver Unit (LPU) series of collars are the most advanced flotation collars manufactured today. Engineered for dependability and reliability, the LPUs have a proven performance history.

FEATURES

- LOWER PROFILE AND SUPERIOR COMFORT OVER COMPARABLE SYSTEMS
- INCREASED NECK SIZE FOR GREATER MOBILITY
- CONSTRUCTION EXTENDS REPACK AND LOWERS INSPECTION CYCLE
- REDUNDANT FLOTATION CELLS ORIENT WEARER FACE-UP IN WATER (AUTO-ROTATION)
- BUOYANCY CELL DESIGN SUPPORTS 67 LB (30 KG) OF STEEL
- MODULAR COMPONENTS, REDUCE SPARES COSTS
- ADAPTS TO EXISTING VESTS AND RECOVERY PARACHUTE HARNESSES
- USES IN-SERVICE, WATER-SENSING AUTO-INFLATORS*
- MANUAL INFLATOR ENABLES USER EGRESS BEFORE DEPLOYMENT



	LPU 33/P	LPU 34/P	LPU 36A/P	LPU 37A/P	LPU 38/P	LPFT3H
P/N- Packed	-	0103100-3	-	0111100-3	-	0101100-1
P/N- Kit	0102200-1 ¹	0103200-3	0110200-1	0111200-3	0115200-1 ²	0101200-1
NSN- Kit	-	4220-01-483-4390	4220-01-483-9381	4220-01-520-8058	4220-01-510-8555	-
Inflator	Automatic	Manual	Automatic	Manual	Automatic	Manual
Color Options	Green, Black, Tan	Green, Black, Tan	Green, Black, Tan	Green, Black, Tan	Green, Black, Tan	Green, Black, Tan
Qualification	U.S. Navy	U.S. Navy	U.S. Navy	U.S. Navy	U.S. Air Force	U.S. Army
Notes	Optional: leg straps (P/N 0103260-1) or waist harness (P/N 0101263-1/-3)	Optional: leg straps (P/N 0103260-1) or waist harness (P/N 0101263-1/-3)	Optional: leg straps (P/N 0103260-1) or waist harness (P/N 0101263-1/-3) Trainer system also available.	Optional: leg straps (P/N 0103260-1) or waist harness (P/N 0101263-1/-3)	Integrates with PCU-15/16 flight harness	Optional: leg straps (P/N 0103260-1) or waist harness (P/N 0101263-1/-3)

1. LPU 33/P and LPU 36A/P kits do not include FLU-8B/P automatic inflation device

2. LPU 38/P kit does not include FLU-9B/P automatic inflation device or CO₂ cylinders

RICARDO FLORES
BUSINESS DEVELOPMENT DIRECTOR
CANADA & LATIN AMERICA
ricardo@iptsb.com

TAY KAY LAI
BUSINESS DEVELOPMENT DIRECTOR
ASIA/PAC
tay@iptsb.com

MONICA SEMPERLOTTI
BUSINESS DEVELOPMENT DIRECTOR
EMEA
monica@iptsb.com

INTEGRATED PROCUREMENT TECHNOLOGIES
7230 HOLLISTER AVENUE
GOLETA, CA 93117 USA
P. 805 682 0842 F. 805 682 9434

The AN/ARC-164 standard avionics radio provides the DoD and NATO standard anti-jam UHF voice communications in support of modern military operations.

- 10 watts AM; 25 KHz channel spacing
- Have Quick II ECCM
- Line-of-sight voice
- 2,000 hours demonstrated mean-time-between-failures (MTBF)
- COMSEC/secure speech compatible
- ANVIS Green A front panel lighting and electronic fill port
- Form, fit, function replacement for obsolete UHF radios
- Upgradeable in the field



CONFIGURATION	WIDTH (in)	HEIGHT (in)	DEPTH (in)	WEIGHT (lb)
RT-1504	4.98	4.730	8.32	8.84
RT-1505A	5.75	4.875	8.85	9.25
RT-1518C	5.75	4.875	8.85	9.25
RT-1614*	4.98	4.730	9.11	9.75
C-11718	5.75	4.875	5.44	4.32
MXF-243	5.74	2.980	5.45	3.00

MOUNTING CONFIGURATION	RT-1505A Panel	RT-1518C Panel	RT-1504 Remote	RT-1614 Remote
FREQUENCY RANGE	225.000 to 399.975 MHz			
NO. OF CHANNELS	UHF 7000 (including 20 preset and 1 Guard channel available from panel mount RT and the radio set control).			
MODULATION TYPE	AM			
PRIMARY POWER	R/T Receiver: 35 watts to 16 watts typical Transmitter: 110 watts to 85 watts typical at 24 to 33 Vdc			
CONTROL BOXES	20 watts at 24 to 33 Vdc			
CHANNEL TIME CHANGE	0.25 second maximum in normal mode			
AGC	+5, -4 dB from 4 μV to 0.5V (all receivers) (1 mV ref)			
SQUELCH				
ADJUSTMENT RANGE	0 to 4 μV minimum			
HYSTERESIS	2 to 8 dB			
ATTACK TIME	50 milliseconds maximum			
SELECTIVITY	Narrowband	Wideband		
6 dB	±12 kHz minimum	±35 kHz minimum		
40 dB	±25 kHz maximum			
60 dB				±75 kHz
AUDIO OUTPUT POWER LEVEL	Normal 200mW Min (Adj)	Wideband		
VOLTAGE LEVEL				2.0 Vrms min
LOAD IMPEDANCE	150 ohms	500 ohms		
RESPONSE	+1, -3 dB (300 to 3500 Hz)	+3, -5 dB (70 to 25 kHz)		
DISTORTION AT 50% MOD	10% maximum			
VOLTAGE LEVEL	35 dB	No squelch		
VOLTAGE LEVEL	37 dB	Not controlled		

RICARDO FLORES
BUSINESS DEVELOPMENT DIRECTOR
CANADA & LATIN AMERICA
ricardo@iptsb.com

TAY KAY LAI
BUSINESS DEVELOPMENT DIRECTOR
ASIA/PAC
tay@iptsb.com

MONICA SEMPERLOTTI
BUSINESS DEVELOPMENT DIRECTOR
EMEA
monica@iptsb.com

INTEGRATED PROCUREMENT TECHNOLOGIES
7230 HOLLISTER AVENUE
GOLETA, CA 93117 USA
P. 805 682 0842 F. 805 682 9434



F-15 CAPABILITIES



Columbus Jack has partnered with Integrated Procurement Technologies to support military customer needs worldwide. This proactive partnership provides a complete customer service package that includes responding to spare and repair requirements.

VARIABLE HEIGHT TRIPOD JACK

MODEL 50J25178
10 TON CAPACITY
NSN 1730-00-516-2019



HAND CARRY AXLE JACK

MODEL CJ67D0250-1
15 TON CAPACITY
NSN 1730-00-854-2237



AIRCRAFT TIRE BEAD BREAKER

MODEL 7094-010
25,000 LB CAPACITY
NSN 4910-01-305-7271



ENGINE TRANSPORTATION TRAILER

MODEL 5380-010
8,000 LB CAPACITY
NSN 1740-00-061-3039



PORTABLE FLOOR CRANE

MODEL 9319-010
1,500 LB CAPACITY
NSN 3950-01-371-9144



RICARDO FLORES
BUSINESS DEVELOPMENT DIRECTOR
CANADA & LATIN AMERICA
ricardo@iptsb.com

TAY KAY LAI
BUSINESS DEVELOPMENT DIRECTOR
ASIA/PAC
tay@iptsb.com

MONICA SEMPERLOTTI
BUSINESS DEVELOPMENT DIRECTOR
EMEA
monica@iptsb.com

INTEGRATED PROCUREMENT TECHNOLOGIES
7230 HOLLISTER AVENUE
GOLETA, CA 93117 USA
P. 805 682 0842 F. 805 682 9434

THE POWER OF PARTNERSHIP



F-15 CAPABILITIES



Hartwell is the industry's first choice in the design and manufacture of quick access latching systems for aircraft and the first company that aircraft engineers call on for design assistance on all new latching applications.

Hartwell Corporation (83104) and Integrated Procurement Technologies have entered into an agreement to support military customer needs worldwide. This proactive partnership enables us to provide optimized solutions for high performance components to military operators around the world.

P/N	DESCRIPTION	NSN	P/N	DESCRIPTION	NSN
H165-1-125-1000			H3135-5	CATCH,FLUSH	5340-01-241-1728
H2404-1	CATCH,FLUSH	5340-00-354-5541	H3177-1-164-1000	LATCH ASSY FLUSH	
H2404-5	CATCH,FLUSH	5340-00-354-5548	H3177-3-125-1000	CATCH,FLUSH	5340-01-445-2085
H2413-1-115-196	CATCH,FLUSH	5340-01-627-0984	H3177K3288	CATCH,CLAMPING	5340-01-059-8495
H2413-1-125-218	CATCH,CLAMPING	5340-01-131-9738	H5000-2-064-156	CATCH,FLUSH	5340-00-530-7640
H2413-1-125-250	CATCH,FLUSH	5340-01-536-8392	H5000-2-064-312	CATCH,FLUSH	5340-00-026-4556
H2413-1-156-164			H5000-2-102-102	CATCH,FLUSH	5340-00-598-2858
H2413-1-188-250	CATCH,FLUSH	5340-01-135-6690	H5000-2-102-125	CATCH,FLUSH	5340-00-523-6355
H2422-3	CATCH,FLUSH	5340-01-097-8563	H5000-2-102-179	CATCH,FLUSH	5340-00-067-3320
H2422-4	CATCH,FLUSH	5340-01-326-1366	H5000-2-164-196	CATCH,FLUSH	5340-00-613-8295
H2422-5	CATCH,FLUSH	5340-01-332-7610	H5000-2-164-312	CATCH,FLUSH	5340-00-567-5006
H2425-5	CATCH,FLUSH	5340-01-097-9631	H601K2405	CATCH,CLAMPING	5340-01-372-4741
H2459-11	HOUSING ASSEMBLY,LA	1560-01-011-8803	H601P071C352	CATCH,FLUSH	5340-01-121-8793
H2459K2169	LATCH ASSEMBLY	1560-01-182-0316	H601P071C377	CATCH,FLUSH	5340-01-142-1791
H2953-1-081-142	CATCH,FLUSH	5340-01-175-7795	H601P100C225	CATCH,FLUSH	5340-01-113-0894
H2953-1-081-218	CATCH,FLUSH	5340-01-319-0336	H601P160C185	CATCH,FLUSH	5340-01-111-9881
H2953-1-102-164	CATCH,FLUSH	5340-01-174-0905	H601S071C377	CATCH,FLUSH	5340-00-612-6057
H2953-1-102-179	CATCH,FLUSH	5340-01-112-3530	H80-5	LATCH ASSY SELF CLOSING	

RICARDO FLORES
BUSINESS DEVELOPMENT DIRECTOR
CANADA & LATIN AMERICA
ricardo@iptsb.com

TAY KAY LAI
BUSINESS DEVELOPMENT DIRECTOR
ASIA/PAC
tay@iptsb.com

MONICA SEMPERLOTTI
BUSINESS DEVELOPMENT DIRECTOR
EMEA
monica@iptsb.com

INTEGRATED PROCUREMENT TECHNOLOGIES
7230 HOLLISTER AVENUE
GOLETA, CA 93117 USA
P. 805 682 0842 F. 805 682 9434



F-15 CAPABILITIES



VIPER-2E 4-CHANNEL ANALYZER

The VIPER-2E is a versatile yet compact instrument that combines all of the diverse technologies required for high-end engine vibration analysis, transient balance, fan trim balance, propeller balance and acoustic analysis into one tool. All of these maintenance functions can be easily performed on virtually any airframe and/or engine type using the VIPER-2E.



FEATURES

- Transient Balance yields test cell quality balancing results
- Direct PDF report generation onto a USB flash drive
- .CSV export of raw data for further analysis
- SmartTach speed and phase processing allows direct measurement of the engine speed signal
- Four-channel simultaneous data acquisition for speed and accuracy
- Supports inputs for (4) Vibration Channels, (4) Mag P/U or Optical Tach Inputs, (1) TraX Optical Tracker, and (1) Strobe
- USB port for direct connection to peripherals
- Housed in ZERO case for maximum environmental protection
- 1-year warranty plan for defects of components and workmanship

1. TRANSIENT VIBRATION ANALYSIS

Accurate High-Speed Run-up and Coast-Down Transient Surveys

2. TRANSIENT BALANCE

Save Time and Money by Collecting Data in a Single Sweep

3. MIL-SPEC DESIGN

Ensure Reliability of Measurements in Harsh Environments

RICARDO FLORES
BUSINESS DEVELOPMENT DIRECTOR
CANADA & LATIN AMERICA
ricardo@iptsb.com

TAY KAY LAI
BUSINESS DEVELOPMENT DIRECTOR
ASIA/PAC
tay@iptsb.com

MONICA SEMPERLOTTI
BUSINESS DEVELOPMENT DIRECTOR
EMEA
monica@iptsb.com

INTEGRATED PROCUREMENT TECHNOLOGIES
7230 HOLLISTER AVENUE
GOLETA, CA 93117 USA
P. 805 682 0842 F. 805 682 9434